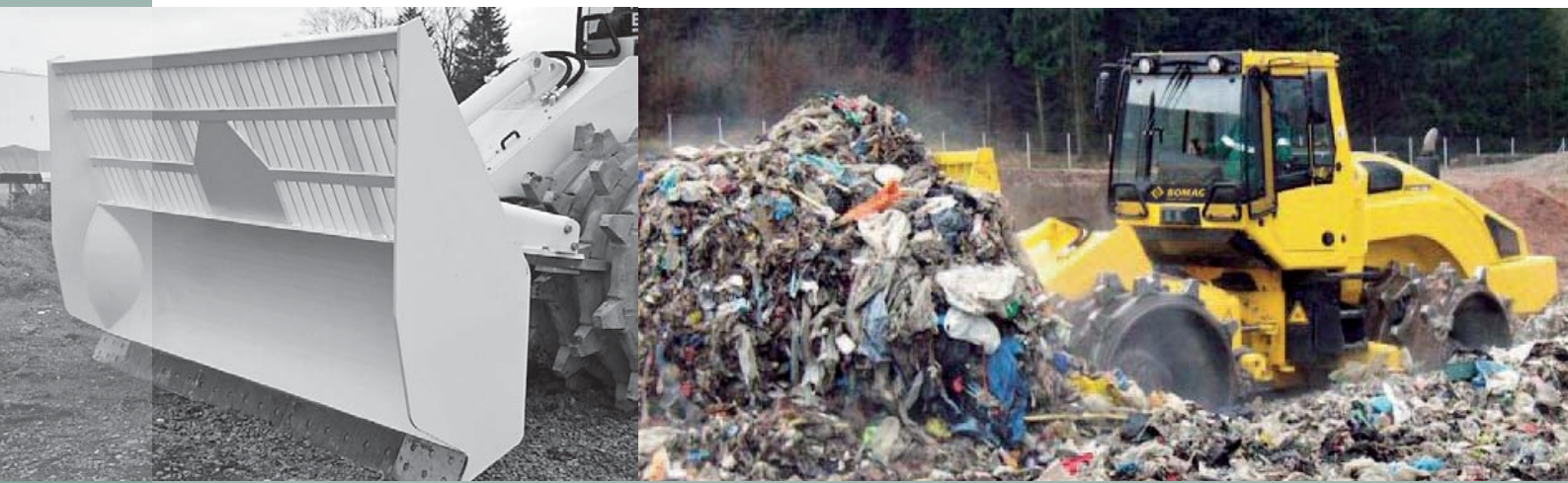


## **BOMAG BC 462/BC 472 refuse compactor.**

The Fusion of Performance and Compaction  
in the 21 t to 26 t class.



## **BOMAG refuse compactors – Effective compaction technology combined with outstanding pushing power.**

This BOMAG refuse compactor in the 21 t to 26 t class is setting new standards. BOMAG's expertise as market leader and the skills thus acquired have been incorporated into this unit and enhanced by new thinking. The result is a compact compactor featuring state-of-the-art technology, high productivity, low operating costs and easy maintenance – ideally suited to the smallest landfill sites or due to its versatility on larger landfills.





# The formula for success!

The basis for financial landfill success is the optimisation of the site's capacity through the best possible compaction. BOMAG refuse compactors provide the key to this, as they are purpose-designed for the tough working conditions found on landfill sites:

- **Efficiency:** low fuel consumption means low operating costs
- **Power:** modern, generously designed new generation diesel engines provide ample power for every site's needs
- **Cost-effectiveness:** the design and performance of this refuse compactor provides cost-effective compaction with the lowest maintenance demands
- **Ergonomics:** for daily checks or scheduled maintenance, the layout gives easy access to the key maintenance points, so service work is completed thoroughly and fast
- **Versatility:** a wide scope of applications thanks to a choice of market-oriented models
- **Value retention:** durable technology and legendary quality ensure high resale values
- **Design:** progressive iF Product Design Award winning concept
- **Security:** a wide choice of warranty plans and maintenance contracts are available to quantify long term operating costs



# Dozing and distributing.

The key to optimum compaction is to spread the refuse at the appropriate layer thickness. For even distribution the operator needs a precision machine, high pushing power and optimum traction. Simply a given with BOMAG refuse compactors!

The joystick is easy and less tiring for ultimate precision when working. The smooth hydrostatic drive converts the power of the water-cooled turbo diesel engine into extremely high output power.

The limit control smoothly and automatically adjusts the travel speed to the actual load giving optimum utilisation of the power generated. A unique feature is the oscillating articulated joint designed to withstand the toughest loads and stresses on any landfill site. It provides 15° oscillation and 35° steering to both sides between the front and rear frames. The result: all wheels maintain ground contact for optimum compaction and traction.





# A truly multi-functional machine.



Differential lock for the toughest conditions.

In the 21 t to 26 t class, there are three different versions of the BOMAG refuse compactor with dozer blades (RB) or loading buckets (RS).

## Dozer blades

- Large size blade with grid attachment for the best all-round overview
- Fenders attached on both sides for optimum refuse handling and control
- Three rotatable wear-resistant steel cutting blades and two edge cutters

Dozer blade width: 3,000 mm or 3,600 mm

Dozer blade height: 1,956 mm



Grid attachment for RS versions gives added visibility.



Refuse compactor with dozer blade...

Height adjustment above ground level: 1,200 mm

Height adjustment below ground level: 120 mm

## RS version with hydraulic lifting gear

- For multi-functional use of the compactor (transportation, handling and loading)

Max. load height: 3,050 mm

Lifting height: 4,130 mm

## Bucket for RS versions

- Robust bucket with grid attachment for added visibility
- With a cutting edge or bucket with three-section teeth mounted in quick change holders

Bucket volume: 3.5 m<sup>3</sup>

Bucket width: 3,000 mm

## Differential locks

- Self-locking differentials on both drive axles for optimum traction in the toughest conditions

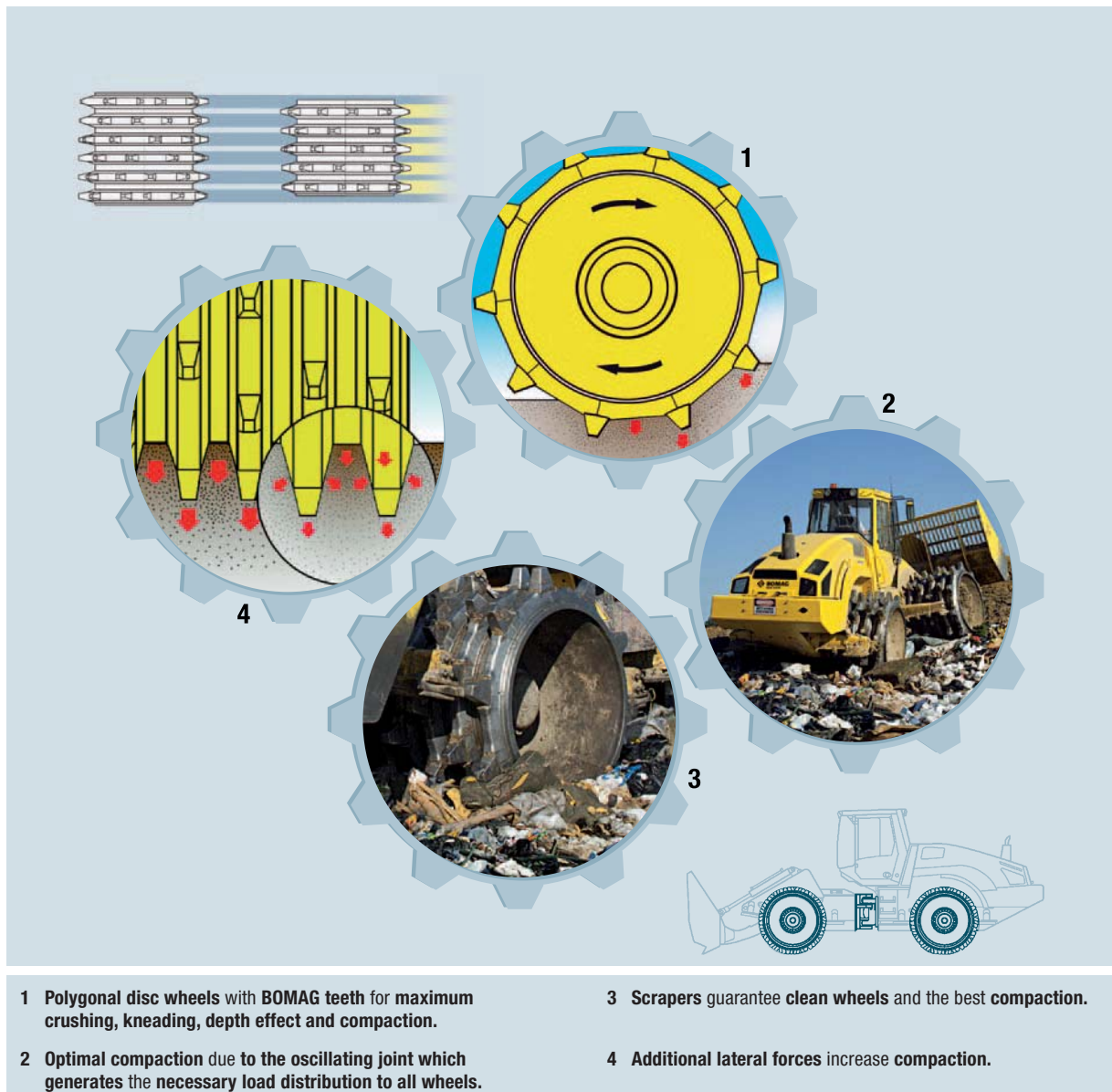


... or with loading bucket.

# Compaction.

If material is evenly distributed in suitable layers the best compaction result is possible. This significantly affects the life of a landfill site. Given the high investment needed on landfills today

every additional m<sup>3</sup> filled is money saved. BOMAG achieves the optimum compaction with its wheel geometry, scraper beams and superior ground contact.



# These teeth are the big difference.

**BOMAG offers wheels with replaceable caps or premium teeth for the highest refuse crushing and compaction effect.**

## **BOMAG wheels with replaceable caps**

- Welded wheels with inner taper on both sides for optimum stability
- Specially shaped polygonal compaction segments with replacement cap holders are welded on for increased compaction
- Equipped with highest quality, forged replacement caps for superior refuse crushing and compaction performance
- Precision mounting ensures these caps fit tightly and securely
- Caps can be changed easily and quickly by removing the dowel pins
- Optimised tooth-change tool available

## **BOMAG wheels with premium teeth and 10,000 hour wear warranty**

- Welded wheels with inner taper on both sides for optimum stability
- Armour welding to wheel edges for extended service life works in combination with the cable cutters
- Specially shaped polygonal compaction segments with welded-on compaction teeth for reliable compaction
- Compaction teeth from high wear-resistant cast composite; i.e. two materials cast in turn for greatly extended service life



Adjustable scrapers give uninterrupted operation.



High quality, quick-change forged replacement caps.



Welded wheel sections with inner taper on both sides for optimum stability.



Premium teeth with 10,000 hour wear warranty.



# Ergonomics and Easy Operation.

**This is often underestimated: why invest in any machine if the operator is so challenged by his work that after 3 hours he is unable to produce the best result?**

BOMAG overcomes this problem with a flexibly mounted cab, an ergonomically designed workplace and low sound pressure levels. There are also useful optional extras that make it easier

for the operator to monitor the machine or which increase comfort and general operating convenience.



**1 Cab with wide glassed areas gives the best overview** of the work environment.

**2 An ergonomic, comfortable workplace** for fatigue-free work.

**3 Joystick control – everything remains under control** all the time.

**4 All important features are arranged directly in the field of vision** ensuring the operator is always kept up-to-date with his machine.



# For yet more comfort and convenience...

## Cab comfort

- This comfortable cab meets ROPS and FOPS regulations

## Configuration:

- Heating and air conditioning system
- Working lights
- Two large exterior rear-view mirrors
- Super-sized storage spaces in the cab door
- Safety glass
- Windscreen wiper with washer system
- Sprung operator's seat with textile cover, arm-rests and seat belt

## Auxiliary heating (Airtronic)\*

- Auxiliary heating independent of the engine (air heating), in addition to the existing heating system

## Air-cushioned operator's seat\*

- Ergonomic hi-comfort seat with pneumatic suspension. APS (Automatic Positioning System) always provides the best position to operate the controls



Auxiliary heating independent of the engine.



Cab comfort to ROPS and FOPS standard.

## CD radio\*

- Stereo CD radio (MP3) including aerial and 2 loudspeakers in the cab roof. The drive is resistant to vibration

## Oil temperature gauge (hydraulic oil)\*

- Additional pointer/round instrumentation indicates the hydraulic oil temperature in °C

\*optional



Ergonomic dashboard with easy to understand operating controls.

# Safety is Standard.

For BOMAG safety is an issue with no room for compromise. Even in standard versions, these BOMAG compactors meet all safety requirements for everyday use on landfill sites. Additionally each

model can be adjusted for special uses with optional functions. This means that every individual site requirement can be met in full.



**1** Frame with enclosed sections for the best protection of all components; no ingress of material and nothing to ignite on hot components.

**2** Cab design complies with ROPS and FOPS regulations.

**3** Two independent braking systems (hydrostatics for the service brake, multiple discs for the parking brake).

**4** Large mirrors on both sides combined with the large glassed areas provide excellent all-round visibility.

# Making site life easier.

## ■ Protection grill for cab\*

Protective grill with robust frame prevents damage to the front screen from flying objects.

## ■ Protective ventilation system\*

Contaminated outside air is purified through several filter stages. First, the air goes into the coarse particle filter, or a multi-cyclone, which removes up to 98% of coarse dust particles ( $1\mu$ ). The next suspended matter filter retains finer dust particles as well as fungus spores and bacteria. Up to 99% separation is achieved at this stage. The final activated carbon filter binds gases, vapours and smells in the air. Slight over-pressure in the cab prevents the ingress of unfiltered air. An integrated circulation filter system effectively removes any particles introduced by the operator. The operator is fully protected from pollution.

## ■ Reversing camera\*

Reversing monitoring system comprises a video camera at the rear and a colour display (screen) in the operator's cab. The system provides an optimal overview of the working area. The screen can be removed easily and refitted; e.g. for secure storage outside working hours.

## ■ Fire extinguisher\*

Hand fire extinguisher with 6 kg content – for quick action ahead of the fire and rescue services.

## ■ Electronic theft protection\*

The machine is ready to start for 30 seconds when entering a six-digit security code. The keyboard is attached to the back of the cab. The system offers highly effective security against unauthorised use.



A front grid protects the screen from damage.



The protective ventilation system reduces pollution arising from gases, vapours or smells.



\*optional



# Easy maintenance.

Maintenance is a factor that really incurs costs. The focus of our development has also included minimising these costs. Considerable improvements have been achieved by arranging the components to optimise maintenance and combining

this with great accessibility. The available options reduce the cyclical expense again considerably and therefore your running costs. An important factor for everyone whose focus is not only on the investment itself.



# Saving time.

## ■ The Service platform\*

There is a service platform on both sides of the machine which facilitates access to the maintenance area and is therefore a valuable aid to maintenance work.

## ■ Central lubrication system\*

A central lubrication system services most mechanical bearing points. The lubricant container with agitator allows the lubricant to be conveyed free from air and features an automatic interval function. The capacity of the grease container ensures supply for up to 500 operating hours and a malfunction alarm guarantees secure supply to lubricating points.

## ■ Reversible fan\*

By reversing the air flow (automatic cycles and manual), dust and coarser particles are blown out from both the radiator grid and the air grilles. The reversible fan increases operational reliability and the operational limits of the machine, reduces radiator cleaning, and lowers fuel consumption by automatically adjusting output to the site conditions. A hood is also included to optimise the air flow.



The service platform provides access to the maintenance area.

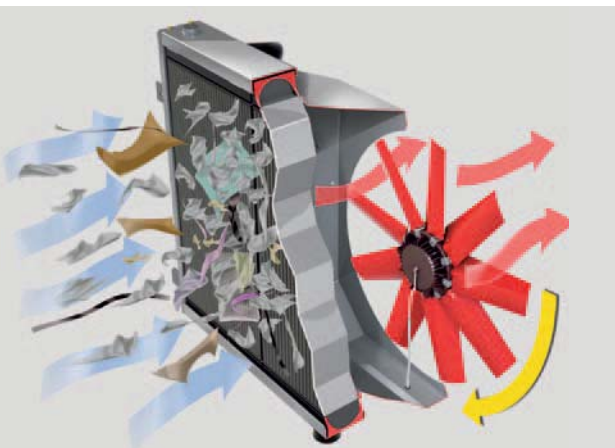


Everything runs smoothly...

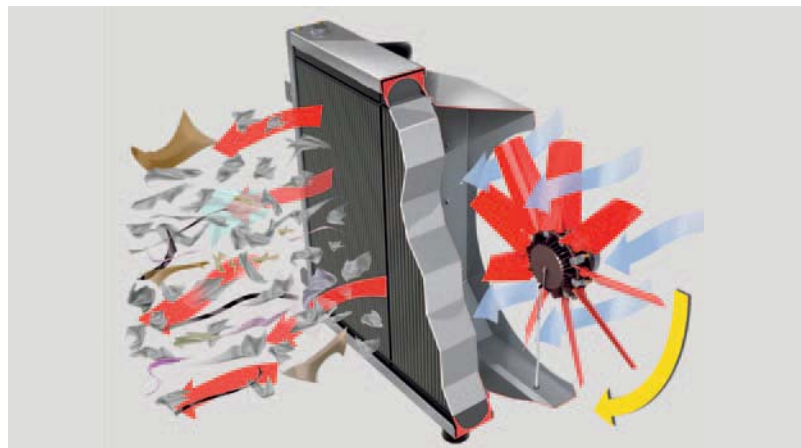
## ■ Extended warranty and maintenance contracts\*

BOMAG Service will customise all packages to suit individual customer requirements and to define operating costs. Users are protected from unexpected costs – this is real added value.

\*optional



By reversing the air flow...



... dust and coarse particles are blown out from the radiator grid and air grilles.

# Cost-effectiveness and durability.

Using the latest, well designed components from proven manufacturers, BOMAG ensures that the financial expectations of users are met – not just in the first few years but throughout the entire life of

the machine. To maintain the highest efficiency of all BOMAG refuse compactors over the long-term key components are protected by highly effective filtration technology.



**1 Greater economy: high output modern diesel engines.**

**2 Hydraulic components designed for continuous operation.**

**3 Three stage fuel filters ensure the long life of the injection system.**

**4 Electronically monitored filter system for cost-effective operations.**



# Maintenance, service and warranty.

## You look for:

High utilisation and long term viability of your machine investment together with low operating costs.

## Our solution:

We will save you time and money with BOMAG spare parts and service products!

- Avoid expensive consequential damage caused by alternative parts which might claim to be suitable. Only BOMAG original spare parts meet your compactor requirements for quality and functionality.
- BOMAG cooling agents and lubricants meet the exact requirements of the machine components and maximise maintenance cycles and component service life.

- BOMAG service kits contain all necessary parts for proper maintenance in one package and what's more, at attractive prices. Nothing could be easier or simpler.

You can rely on BOMAG know-how on service and spare parts matters and by so doing avoid unwelcome bills.



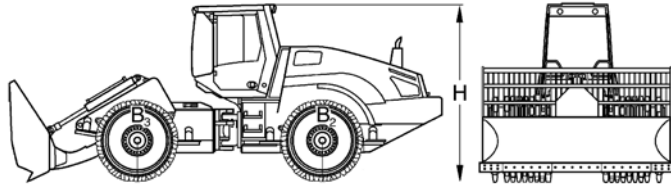
# BOMAG refuse compactors – genuinely multi-functional with a choice of equipment specification.

## Basic models

BC 462 RB, 21 t, 190 kW (dozer blade version)

BC 472 RB, 26 t, 190 kW (dozer blade version)

BC 472 RS, 25 t, 190 kW (bucket version)



## Standard

## Options

### Pushing and distributing

- Adjustable scraper systems
- Wire deflector on the inside of the wheels
- 4 wheel drive with hydraulic differential lock front and rear

- Bucket 3.5 m<sup>3</sup>, 3,000 mm width
  - with cutting edge (only BC 472 RS)
  - Cutting edge and tooth system (only RS version)
- Dozer blade 3,000 mm (only BC 462 RB)
- Dozer blade 3,600 mm (only BC 472 RB)

### The Wheels

- BOMAG wheels with replaceable caps
- Premium wheels with warranty

### Ergonomics and easy operation

- ROPS cab with working lights, vibration-insulated suspension, integrated joystick control on the operator's seat, and heating and air conditioning module

- Stereo CD radio
- Activated carbon filter for cabin
- Auxiliary heating
- Hydraulic oil temperature gauge
- Air-cushioned operator's seat

### Cost efficiency and durability

- Hydraulic filter system with wear monitoring
- Electronic monitoring module with engine stop
- 3 stage fuel filter

- Winter package (fuel preheater)
- BOMAG TELEMATIC power

### Security

- Windscreen wipers front and rear
- Interval switch for front windscreen wipers
- Exterior rear-view mirrors on both sides
- Operator's seat with seat belt

- Protective grill for cab
- Fire extinguisher
- Electronic theft protection
- Reversing camera
- Protective ventilation system

### Easy maintenance means full machine availability

- Service platforms
- Central lubrication system
- Warranty extension \_\_\_ years / \_\_\_ operating hours.

### Miscellaneous

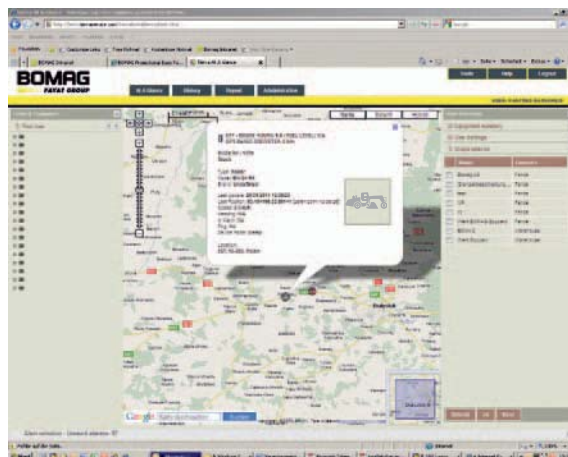
- Special single colour spray paint, excludes cab
- Special two colour spray paint, excludes cab
- Special spray paint for cab
- Multi-coloured spray paint

# BOMAG TELEMATIC.\*

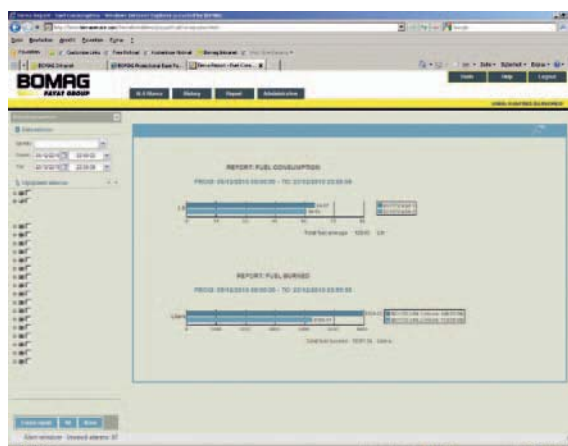
Your machine is now just a mouse click away.

BOMAG also provides support to users in the back office. BOMAG TELEMATIC supplies the most important machine data at any given time – e.g. operating hours and machine output – regardless of the machine's location. BOMAG TELEMATIC can monitor and manage a user's entire fleet. Customers always know where machines are, how they are being used and when the next service is due. Alarms are automatically generated; for example, when a machine leaves a defined site area. BOMAG TELEMATIC also allows fuel costs to be allocated in detail and servicing work to be planned and documented. And it goes without saying that all recorded data can be tracked.

- **Maintenance schedules:** An entire fleet of vehicles at a glance. All services are centrally documented
- **Full fuel monitoring:** BOMAG TELEMATIC provides precise information on actual fuel consumption
- **Flexibility:** BOMAG TELEMATIC is the solution for your entire fleet: machines from other manufacturers can be easily incorporated



Knowing where machines are at a given time – no longer a problem.



Fuel costs can be identified by individual machine.

\*optional



Head Office / Hauptsitz:  
BOMAG  
Hellerwald  
56154 Boppard  
GERMANY  
Tel. +49 6742 100-0  
Fax +49 6742 3090  
info@bomag.com

BOMAG Maschinen-  
handels-gesellschaft m.b.H.  
Porschestraße 9  
1230 Wien  
AUSTRIA  
Tel. +43 1 69040-0  
Fax +43 1 69040-20  
austria@bomag.com

BOMAG (CANADA), INC.  
3455 Semenyk Court  
Mississauga, Ontario L5C 4P9  
CANADA  
Tel. +1 905 361 9961  
Fax +1 905 361 9962  
canada@bomag.com

BOMAG (CHINA)  
Compaction Machinery Co. Ltd.  
No. 2808 West Huancheng Road  
Shanghai Comprehensive  
Industrial Zone (Fengxian)  
Shanghai 201401  
CHINA  
Tel. +86 21 33655566  
Fax +86 21 33655508  
china@bomag.com

BOMA Equipment  
Hong Kong LTD  
Room 1003, 10/F Cham Centre  
700, Castle Peak Road  
Kowloon  
HONG KONG  
Tel. +852 2721 6363  
Fax +852 2721 3212  
bomahk@bomag.com

BOMAG France S.A.S.  
2, avenue du Général de Gaulle  
91170 Viry-Châtillon  
FRANCE  
Tel. +33 1 69578600  
Fax +33 1 69962660  
france@bomag.com

BOMAG (GREAT BRITAIN), LTD.  
Sheldon Way  
Larkfield, Aylesford  
Kent ME20 6SE  
GREAT BRITAIN  
Tel. +44 1622 716611  
Fax +44 1622 718385  
gb@bomag.com

BOMAG Italia Srl.  
Via Roma 50  
48011 Alfonsine  
ITALY  
Tel. +39 0544 864235  
Fax +39 0544-864367  
italy@bomag.com

FAYAT BOMAG Polska Sp. z o.o.  
Ul. Szyszkowa 52  
02-285 Warszawa  
POLAND  
Tel. +48 22 482 0400  
Fax +48 22 482 04 01  
poland@bomag.com

FAYAT BOMAG RUS OOO  
141400, RF, Moscow region  
Khimki, Klayazma block, h. 1-g  
RUSSIA  
Tel. +7 (495) 287 92 90  
Fax +7 (495) 287 92 91  
russia@bomag.com

BOMAG GmbH  
300 Beach Road  
The Concourse, #18-06  
Singapore 199555  
SINGAPORE  
Tel. +65 6 294 1277  
Fax +65 6 294 1377  
singapore@bomag.com

BOMAG Americas, Inc.  
2000 Kentville Road  
Kewanee, Illinois 61443  
U.S.A.  
Tel. +1 309 8533571  
Fax +1 309 8520350  
usa@bomag.com

